

Use the machinery of
AASPA Equipment
pave the way to
success



BITUMEN PRESSURE DISTRIBUTOR



Our Atm Model Of Bitumen Pressure Distributors, Gives Uniform, Unbroken And Prescribed Quantity Of Hot Bitumen Or Emulsion. These Units Can Be Supplied As A Module To Suit Mounting On Customer's Truck Chassis Or Can Be Supplied Completely Along With Standard Truck Chassis. The Unit Has A Built In Heating System With A High Capacity Burner To Heat The Bitumen To The Required Temperature. Various Fuel Options As Well As Burner Options Are Offered On Specific Requests. The Insulated Storage Tank Clad With Industrial Gauge Steel Sheets Built Strictly To Industrial Codes For Storing, Handling And Transportation Of Hot Bitumen. The Cladding Is Optionally Available In A Wide Range Of Options Ranging From Galvanized, Aluminium Or Stainless Steel Sheets. A Unique Pressure Cleaning System Is A Standard, Which Cleans The System After Use And Avoids Clogging At The End Of Days Work. This Reduces The Up Time For The Next Day Or At Next Job Site. Each Unit Comes Loaded With A Speed Detection & Driver Control System, Twin Cylindered Air Compressor, 25 Hp Air Cooled Diesel Engine, High Capacity Positive Displacement Internal Gear Type Asphalt Pump, Remote Control Station, Hand Spraying Attachment And Barrel Heating Arrangement. The Horizontally Folding Spray Bar Is Supplied With A Basic Width Of 2.4 Meter Extendable Up To 4.2 Meter Or Optionally Up To 4.5 Meter. The Fully Circulating Spray Bar Can Deliver Bitumen At Pressures Ranging From 0- 6 Kg/sq M. All Units Are Supplied With An Inbuilt Bitumen Charging / Loading System. The Bar Is Supplied With Nozzles At A Standard Pitch Of 225 Mm, Pneumatically Operated And Easily Adjustable. Complete Range Of Models With Rated Capacities Of 4000, 6000, 8000 & 10000 Litres.





25 HP KIRLOSKAR ENGEEN



ENGINE: Kirloskar 25 hp at 1500 rpm (Air cooled - Diesel engine) are a standard on all kesar bitumen pressure Distributor (Truck Mointed) We care for operators safely by providing a grill to v-belt drive of air compr-essor from engine.



AIR ASSEMBLY

Moisture separator, pressure setting valve and control valve on pneumatic line are all located close to operators seat to enable easy movement of spray bar by operator.





AIR COMPRESSOR



Standard ingersoll rand/ELGI make compressor operating with pneumatic pressure Distributor (Truck Mounted).



SPRAY BAR 36 NOZZELS

The Folding type spray bar consists of a total of 19 spray nozzels which are high in quality and each nozzle has a speaying capacity of six lter/ the nozzels can be individually regulated so as to customize and uniform spraying .High quality hoses withstanding high spray pressure assures operator tension free spraying .

The spray bar canbe moved right left and even up down mechanically .





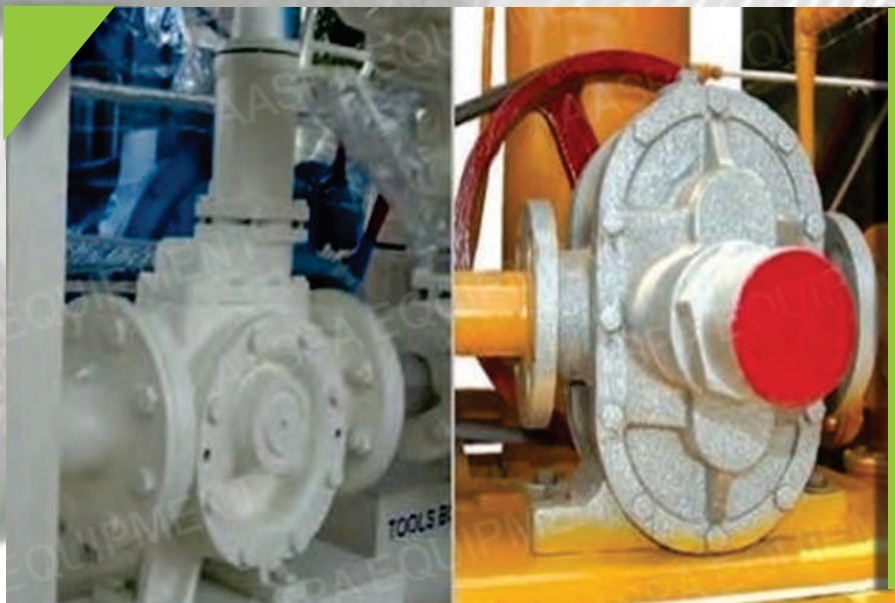
NOZZLES SPRAY RUN & STOP

Air cylinder driven by control valve at driver seat for nozzles spray run and stop.



BITUMEN PUMP:

Bitumen pumps with 2 different pressure setting valve designs. individually regulated so as to customize and uniform spraying. high quality hoses with standing high spray pressure assures operator tension free spraying.





BITUMEN SPRAY BAR



Standard spray bar provided with the aaspa Equipment. tar sprayer is folding type fitted with pressure gauge regulating valve etc.

Standard width of the spray bar is from 2.4 mtrs to 4.2 mtrs which can be extended to upto 6.0 meters.

Adjustment of spray bar height is mechanical.

Pre-heating of spray is by full circulation of preheated bitumen.

Spraying pressure can be adjusted from 0-6 bar.

One Hand spray pipe SS Corrugated 3/4" x 5 meter is also provided.

Cleaning of the spray bar is by air pressure and by diesel oil.

Rate of spray application: 0.3-1.0 kg per sq meters,

Calibration chart is provided at the operator's platform.



BITUMEN PRESSURE GAUGE METER

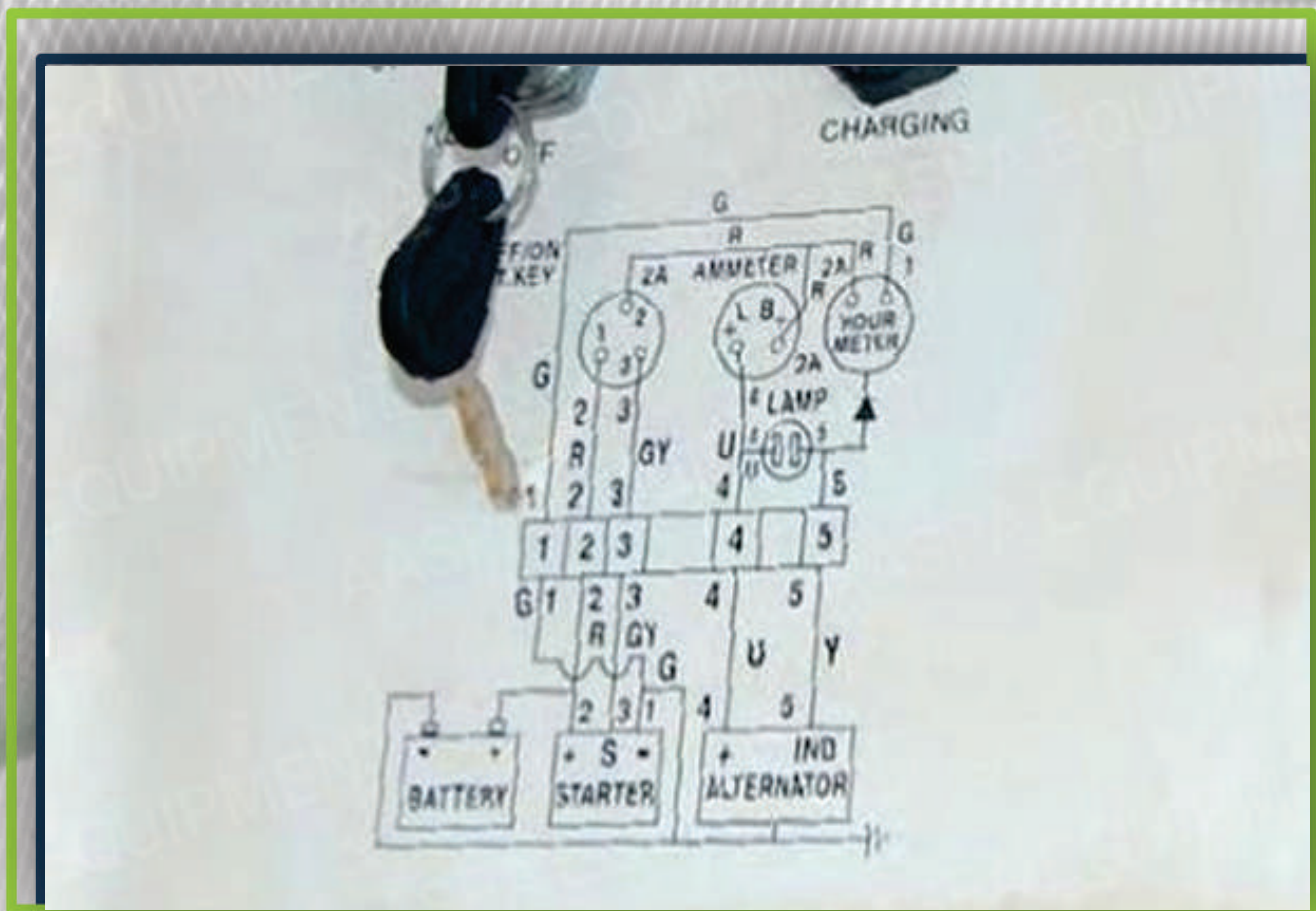
The Pressure gauge meter to set & maintain the pressure of preheated Bitumen from inside the tank.





ENGINE WIRING DIAGRAM

Also shown is the electric wiring diagram just below the console.





BITUMEN SPRAYING SYSTEM ON TRUCK CHASSIS

perfect modular construction to match with your truck chassis.
(yellow colored) which exactly fits over the truck chassis (black color)
the sprayer chassis easily fits over truck chassis and they can be joined by
bolting the truck chassis & welding the sprayer chassis.



BITUMEN SPRAYING ARMS

The distance between the two arms of the truck chassis is 900mm, same is the distance between the two arms of the sprayer chassis. this enables to exactly fit the sprayer chassis over the truck chassis. depending upon the customer's requirement, the distance between the arms of the sprayer chassis can be decreased or increased so that it fits exactly over the required truck chassis.



DRIVER CONSOLE BITUMEN

- The driver console showing
- charging current, hour
- oil pressure meter
- meter & the lubricant



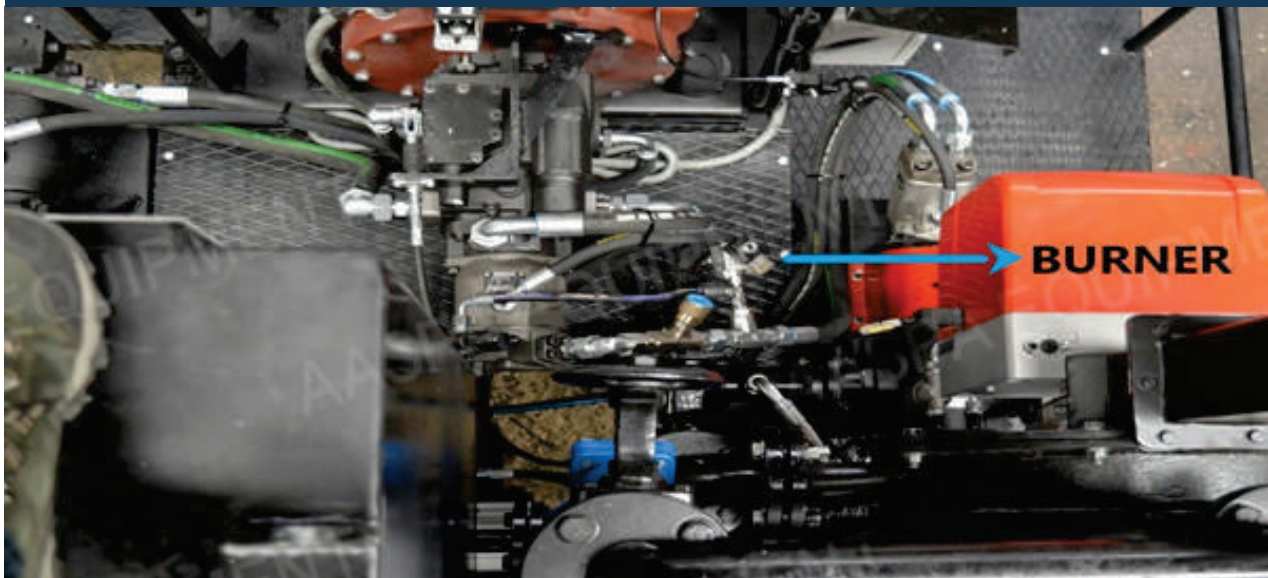
SPRAYING CALIBRATION CHART

spraying calibration chart is provided at operators platform.

SPRAYING CHART (CALCULATED AT 3 BAR OPERATING PRESURE) NOZZLES: 6 l/min.		
QUANTITY (Kg/m ²)	DRIVING SPEED	
	m/min	Km/h
0.3	92	5.5
0.5	56	3.4
1.0	28	1.7

⚙️ BITUMEN DIESEL BURNER :

❖ Benton Diesel Burner: 220 V X 2 Nos.

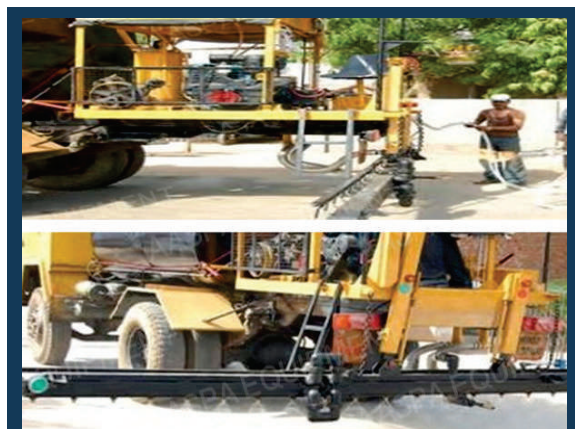


⚙️ BURNER UNIT

Many bitumen sprayer manufacturers tend to ignore or play with this component. The unit has to be of best quality possible. This high pressure oil burner should be capable of heating the contents of the tank quickly. There is also a small hand burner provided with the equipment. It is extremely useful in extreme cold conditions where chances of bitumen clogging are high or in same conditions where the spraying lines are not cleaned properly or adequately.



2 KW GENERATOR FOR BURNER STARTUP



BITUMEN SPRAYING & OPERATION SYSTEM

OUR PLANTS



➤ Contact Us

Aaspa Equipment Pvt.Ltd

📍 A-112,Sahjanand Business Park,Opp Palm Hotel ,Odhav, Ahmedabad,-382415

☎ +91 9898341024 +91 9428325161

✉ info@aspaequipment.com

🌐 www.aspaequipment.com



OUR EQUIPMENTS



ASPHALT PAVER



**ASPHALT DRUM
MIX PLANT**



**WASTE COMPOST
MACHINE**



**WASTE COMPOST
MACHINE**



**STATIONARY CONCRETE
BATCHING PLANT**



**KERB PAVER
MACHINE 1000**



**KERB PAVER
MACHINE 100**



**ROAD MARKING
MACHINE**



**COMPACT CONCRETE
BATCHING PLANT**



**COUNTER FLOW DRUM
MIX PLANT**



BAG MELTER



**BITUMEN DRUM
DECANDER**