

Use The Machinery Of  
**AASPA EQUIPMENT**  
Pave The Way To Success



## **KERB PAVER MACHINE**

**Extrusion Type Machine**  
**Model-AKM-100**

## SALIENT FEATURES

- AKM-100 KERB PAVER that can extrude is excess of 550 line. mtrs. of kerbing per day at a sensible capital cost and with a small crew of semi-skilled labour.
- AASPA AKM-100 Extrusion Type Kerb Paver Machine works on the extrusion principle, in which concrete is fed into the hopper and forced through a mould to form the required shape.
- AKM-100 is designed for laying up to 550 mm height and 700 mm width.
- The machine does not employ vibration, but achieves compaction by a ramming mechanism which forces the concrete into the specially designed mould attached to the primary unit.
- Automatic sensor for steering and height controls that follow reference line Activate Windows Go to Sete, to activate Nanclows
- Quick-change mould design.
- The machine has no powered wheels - forward propulsion results from the opposite reaction to the ramming action



<b>Model</b>	<b>AKM-100</b>
Engine	16 HP Petrol / 10,15 HP Diesel Engine
Steering Control	Auto/Manul
Height Control	Auto/Manul
Drives	Main Drive -5/8"Pitch duplex chain/Hydraulics-VBelt
Compaction Method	By Ramming Mechanism
Minimum Radius of kerb	2.4 mtr
Laying Speed	80 to 120 mtr/hour (As per mold)
Slump Range	zero slump
Destails of Vibrator	Nil
Fuel Consumption	Petrol Engine - 2to3 ltrs/hour & Diesel Engine -1to1.5 ltrs/Hour
Accurancy	3 to 5 mm
Length(without Mould)	1945 mm
Length(with Mould)	2710 mm
Height	930 mm
Width	1155 mm
Weight with mould	915 kgs
Material Feeding (Concrete)	by Transit mixer or a flat Bed Trusk (Tructor Trolley)
Charge Hopper Capacity	0.21m3
Moulds	M.S Moulds to Customer Specification
Accessories	String line assembly finishing Tools

- The flexibility mounted 16 hp petrol engine / 10 hp diesel engine drives the ruggedly designed ram operating mechanism and hydraulic pump.
- All top side covers are removable for ease of service.
- A small crew can successfully operate AKM-100.
- Production depends on crew size and outputs of up to 1000 lin. Mts. Per day have been achieved.
- AKM-100 is at multiple project sites with a variety of kerbing applications, supported by the team of experts from AASPA & performing to the full satisfaction of the customers.



**PLC System**





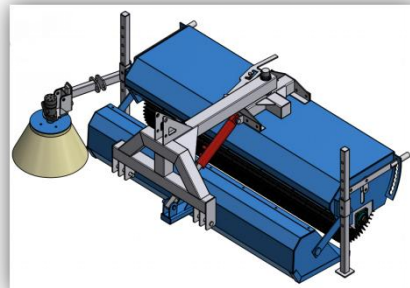
**OUR EQUIPMENTS**



**ASPHALT PAVER**



**ASPHALT DRUM MIX PLANT**



**ROAD SWEEPER MACHINE**



**KERB PAVER MACHINE 1000**



**KERB PAVER MACHINE 100**



**COMPACT CONCRETE BATCHING PLANT**



**ASPHALT BATCH MIX PLANT**



**STATIONARY CONCRETE BATCHING PLANT**



**COUNTER FLOW DRUM MIX PLANT**



**HORIZONTAL STOREGE SILO**

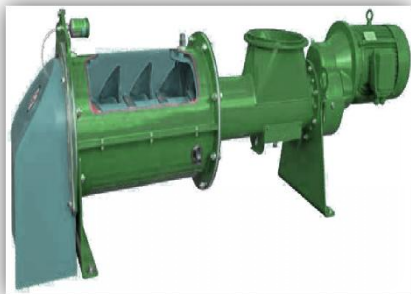


**BITUMEN DRUM DECANDER**



**KERB CUTTING MACHINE**

**OUR EQUIPMENTS**



**DUST  
CONDITIONER**



**WASTE COMPOST  
MACHINE**



**SEGRIGATION  
COMPOST MACHINE**



**REVERSIBLE  
BATCHING PLANT**



**BITUMEN  
EMULSION PLANT**



**WET MIX MACADAM  
PLANT/DLC PLANT**



**COAL FIRED  
BURNER**



**AASPA POTHOLE PATCHER  
WORKING PROCESS**



**MOBILLE CONCRETE  
BATCHING PLANT**



**BITUMEN PRESSURE  
DISTRIBUTOR**



**BITUMEN EMULSION  
SPAREYER**



**FULLY AUTOMATIC  
ROAD MARKING  
MACHINE**



## OUR EXPORTS



### Contact us

223, Arth Business Centre (ABC, Sardar Patel Ring Rd, opp. Torrent Sub-Station, Nikol, Ahmedabad, Gujarat, India 382350

☎ +91 9898341024 +91 9428325161 +91 8980341024

✉ info@aaspaequipment.com, sales@aaspaequipment.com

🌐 [www.aaspaequipment.com](http://www.aaspaequipment.com)

🇮🇳 **Factory Address**

Survey.No.159,Kansarakui-Ganeshpura road Village Randala Visnagar - 384001 Mehsana Gujarat,india

🇺🇸 **USA:**1620 Bryant Dr unit#1102 Round Rock, TX 78664, USA

🇨🇦 **Canada:**1006,4677,Glen Erin Drive,MISSISSAUGA,Ontario,L5M 2E

🇴🇲 **Oman:**P.O Box 924, Postal Code – 112 sultanate of oman